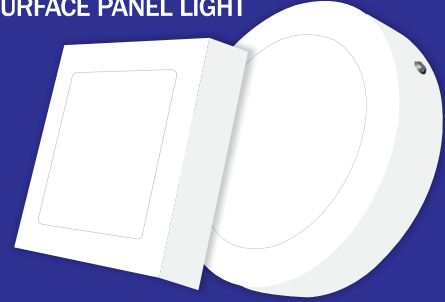




ALL SKD AVAILABLE

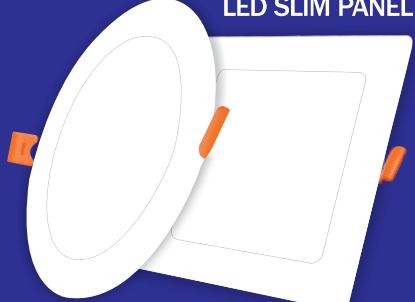
Aluminium Panels

LED SURFACE PANEL LIGHT



6W : 4.0" | 12w : 6.0"
18w : 8.0" | 24w : 12x12"

LED SLIM PANEL LIGHT



6w : 4.0" | 9w : 5.0" | 12w : 6.0"
15w : 7.0" | 18w : 8.0" | 24w : 12x12"



SURFACE PANEL



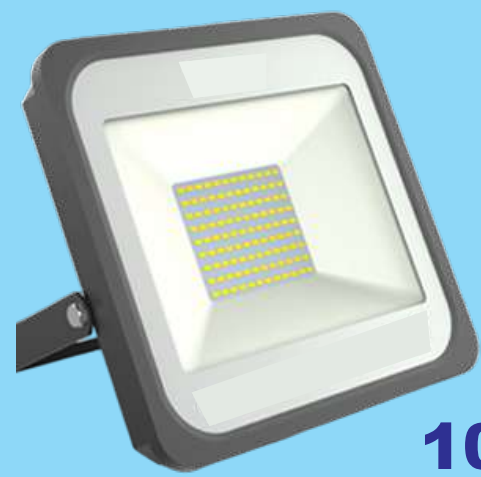
SLIM PANEL

Flood Lights

50w



100w



ALL SKD AVAILABLE

All Aluminium Items



Tiny COB Light

Wattage
7w/12w/18w
Housing Color :
Black + Rose Gold,
Black + Black
White + Black,
White + Rose Gold



COB Spot Light
Body : Black & White
Wattage
7w/12w/18w
M-106



M-559

Linear Light : 5 EYE



6w/10w/20w
Housing Color : Black + Rose Gold, Black + Black
White + Black, White + Rose Gold



Deep Downlighter
12W / 18W

M-918



COB Spot Light

Reflector Model
Wattage
7w/12w/18w
Housing Color :
Black + Rose Gold,
Black + Black
White + Black,
White + Rose Gold

M-206 / 206B



M-826

Cylinder

Wattage
7w/12w/18w
Housing Color :
Black + Rose Gold,
Black + Black



M-157



M-819

Pull Out Light



Wattage
10w/20w/30w



Track Channels

All Sizes Available In
Black & White
10W / 20W / 30W

TRACK LIGHT
WALL MOUNTED LIGHT
CHANNELS



OUTDOOR LIGHTS COMPLETE AVAILABLE

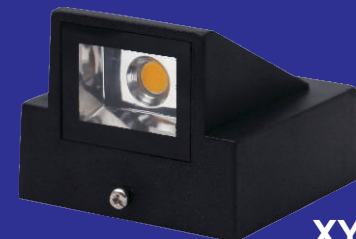
Outdoor Items



Cube Light

2 Way
XY-6501

4 Way
XY-1601



K Lights

XY-2301

Half K



Curve Lens

1+1
XY-2101

2+2
XY-4101



XY-6101

3+3



Full K

XY-1301

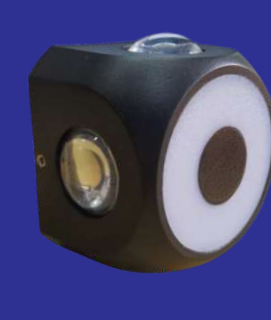
Glass Lights Round/Square



XY-503



XY-903



XY-255



XY-602



XY-516

POWER SUPPLY (SMPS)



5A 10A 16.5A 25A 33A

DRIVER

4W-8W
300mA
Potted



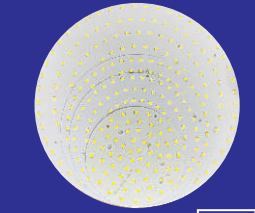
50W
1500mA

1W LED PCB



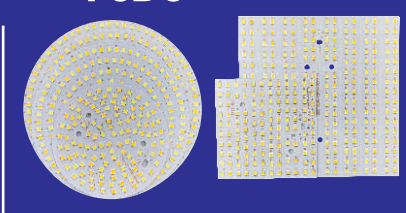
ALL SKD AVAILABLE

PCB's



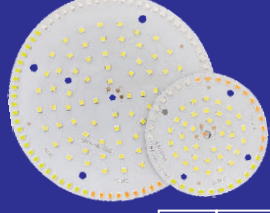
Pc Panel

8w	12w	15w	22w
4"	5"	6"	8"
60 LED	120/100 LED	147/126 LED	192 LED

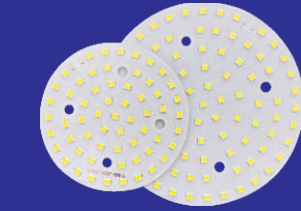


Tri Color

8w	12w	15w
4"	5"	6"
120 LED	200 LED	250 LED



Rainbow
W+PBG | W+R | W+B | W+G | W+P | W+WW



Deep Downlighter
12W | 18W
CW | NW | WW



COB CHIP
CROM BRAND

3W : CW | NW | WW | R | G | B | P
7W | 12W | 18W | 30W : CW | NW | WW



7w Concealed

TRI COLOR :
CW + WW = NW
B + R = P | G + B = R

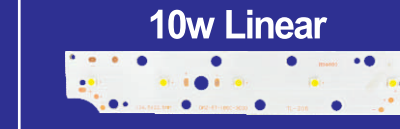


2W DOB
CW | NW | WW
R | G | B | P



7w Concealed

7 LED
CW | NW | WW | R | G | B | P



10w Linear

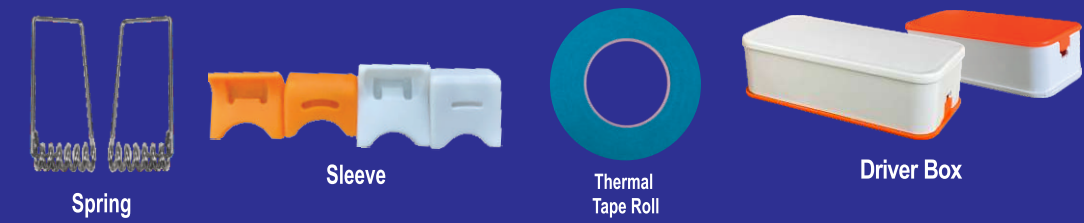
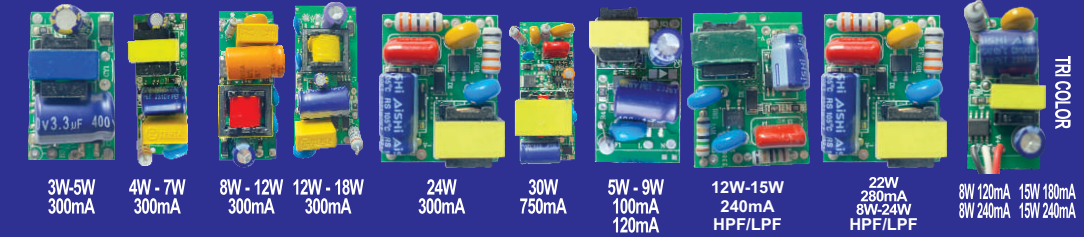
CW | NW | WW



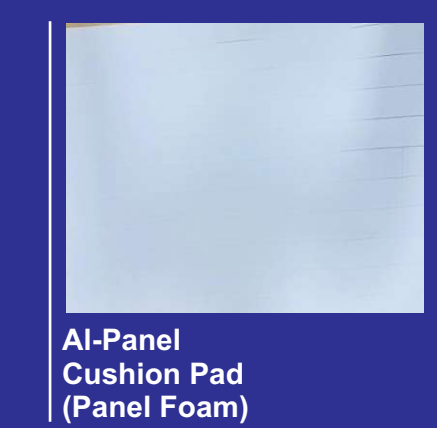
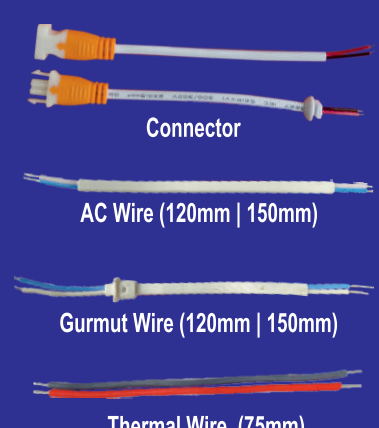
7w Movable

CW | NW | WW

DRIVERS



ACCESSORIES





ALL SKD AVAILABLE

ADJUSTABLE PANELS (5"/6"/8")



PC SURFACE PANELS (4"/6")



MOON SURFACE

RIMLESS

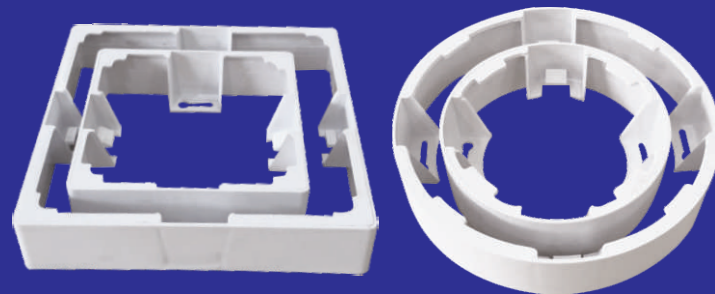


S-Series

PC Panels Round & Square 8W : 4.0" | 12w : 5.0" | 15w : 6.0" | 22w : 8.0"

Rings

PC Panel Rings Round & square



8W : 4.0" | 15w : 6.0" | 22w : 8.0"



ALL SKD AVAILABLE



Our Production Facility

Innovation is Never Ending.....
Many More Models Coming Soon.

+91 - 8586863642, +91 - 8586866653,
+91 - 8586867030, +91 - 9999259558

Shop : 739 Old Lajpat Rai Market, Chandni Chowk,
Delhi-110006 | +91 - 8586866697

Office : D-14, Sector-3, Bawana Ind. Area, Delhi - 110039

Email : kingbirdlight@gmail.com | www.kingbirdlight.com



KING BIRD LIGHT®

ALL KINDS OF SKD AVAILABLE



+91 - 8586863642, +91 - 8586866653
+91 - 8586867030, +91 - 9999259558



ALL SKD AVAILABLE

DEEP LIGHTS 3W-5W



DL-01

DL-04

DL-MINI

DOWNLIGHTS



CL-02

CL-RAZOR

CL-UFO

CL-K2

CL-5W-NEW

RAINBOW



RAINBOW
(4"/6")

RAINBOW
SURFACE
(6")

RAINBOW
ADJUSTABLE
(6"/8")

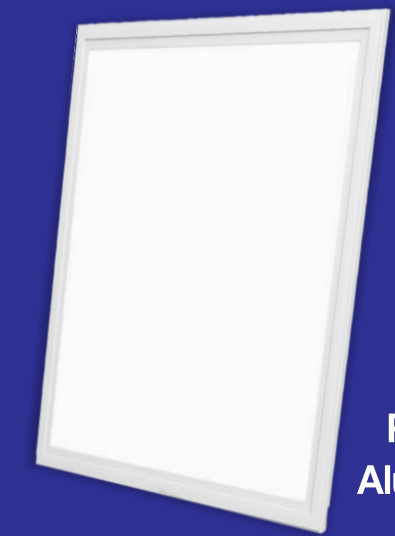
SPOT LIGHTS



2W SPOT



CL-7W
SPOT



2X2
PANEL
Aluminium